



Walk Score[®]



Get Your Score:

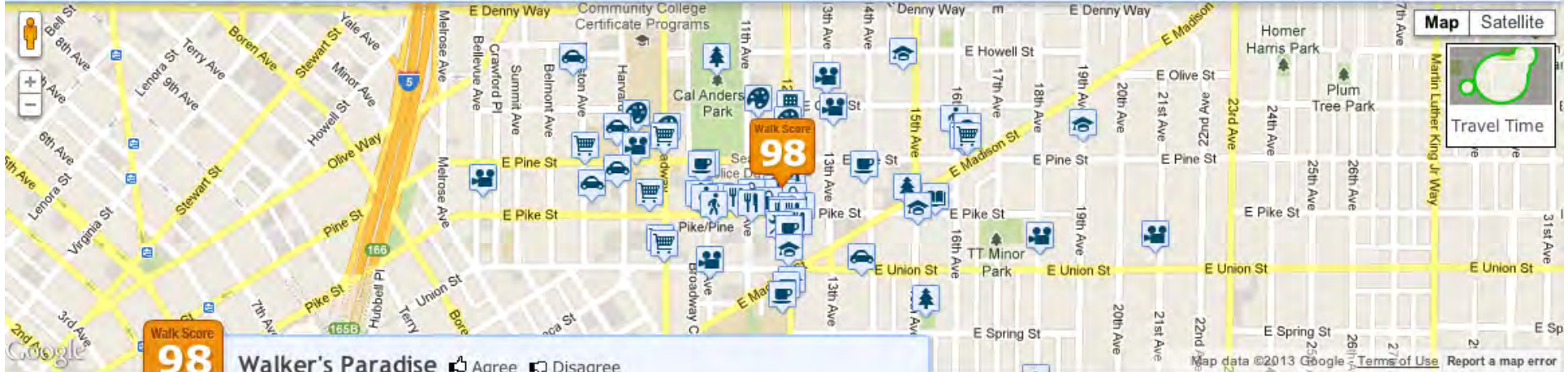
Go



Matt



Share



Walk Score
98

Walker's Paradise [Agree](#) [Disagree](#)

Daily errands do not require a car.

Near 1517 12th Avenue

Seattle, WA [Capitol Hill](#)

[Slideshow](#)

- Restaurants & Bars**
D'Ambrosio Gelato 48 ft
- Coffee**
Cupcake Royale 241 ft
- Groceries**
Broadway Sunday Farmers M .18 mi
- Outdoor Places**
MLK Day Parade 130 ft
- Schools**
Seattle Academy .12 mi
- Car & Bike Shares**
Zipcar: 14th Ave/E Union St .18 mi



More places: [Art & Community](#), [Shopping](#), [Entertainment](#), [Health](#), [Errands](#), [Problem Spots](#)

Transit Score
84
Excellent Transit
Nearby: 129 bus, 2 rail, 0 other

Bike Score
89
Very Bikeable
Mostly flat, excellent lanes

[United States](#) > [Washington](#) > [Seattle](#) > [Capitol Hill](#)

[Use Old Version of Walk Score](#)

[Add a Place](#)

[Free iPhone App](#)

GET SUBWAY SURFERS FOR FREE ON GOOGLE PLAY

[Google play](#) [Play Now](#)

Recently Added



10th and Pike panorama photo

[Capitol Hill](#)

0



El Capitan Apartments

Feedback

TRACE BUYERS LOUNGE



Now
Selling.



Sales Office
& Models
1414 12TH AVE



TRACELOFTS.COM
(206) 404-LOFT



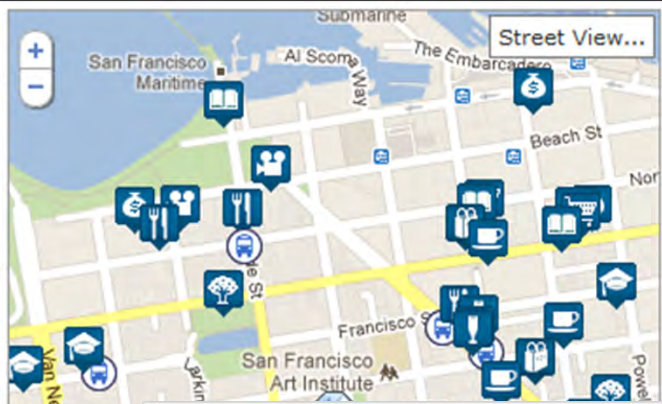
Scores a
PERFECT
100
on walkscore.com



Walk Score® 88 out of 100

Very Walkable

- Restaurants:**
Zarzuela .2mi
- Coffee:**
Caffe Sapore .2mi
- Groceries:**
Pegasus Food Shop .2mi
- Shopping:**
Martin-Richards .2mi
- Schools:**
Yick WO Elementary School .1mi
- Parks:**
Michelangelo Playground .07mi
- Books:**
County Government Branches .3mi
- Bars:**
Bimbo's 365 Club .2mi
- Transit Score™: 90**
POWELL-HYDE .08mi
- More Places:**
1,107 nearby places
- See commute time to:**
909 5th Ave Seattle



Your Commute

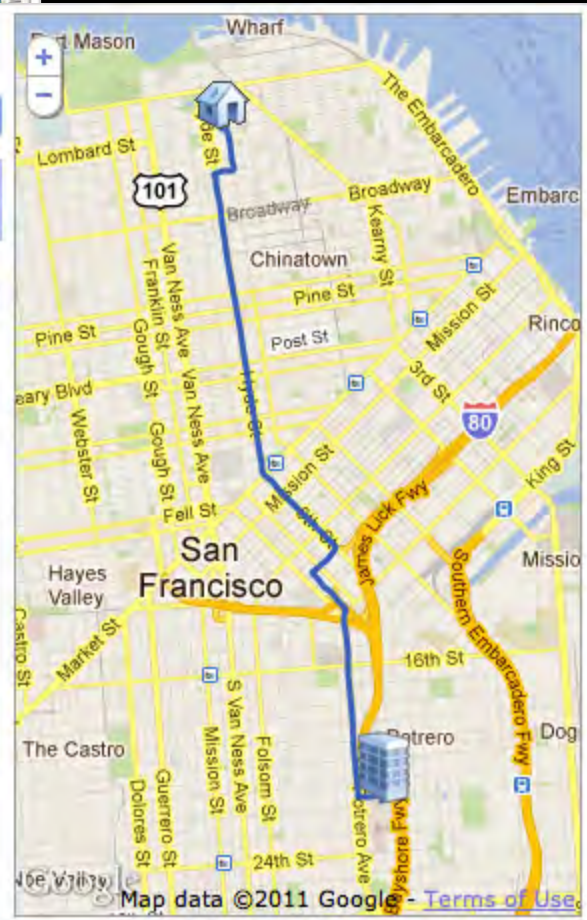
1001 Potrero Avenue, San Fra

- 16 minutes (3.67 mi)
Cost per month: \$110
- 40 minutes (3.12 mi)
Route 1 of 2 (next): 19 bus
- 1 hr 13 minutes (3.67 mi)
- 33 minutes (5.66 mi)

Hills Between Home and Work



Powered by: **Walk Score®**



Map data ©2011 Google - Terms of Use

Find rentals:

Go



[Share](#)

[Clear Filters](#)

[Price & Beds](#)

[My Commutes](#)

[Gotta Have...](#)

[Public Transit](#)

[Neighborhoods](#)

Results

Favorites 7

Sort: **Featured**



\$2,155-\$2,365
Geary Courtyard
Studio
Tenderloin
8 mins



\$1,795
77 Bluxome Apartments
Studio
South of Market
12 mins



\$2,170-\$2,845
La Terrazza
1-3 beds
29 mins
Walk Score: 69



\$3,235-\$6,618
Archstone South Market
1-3 beds
Yerba Buena
14 mins



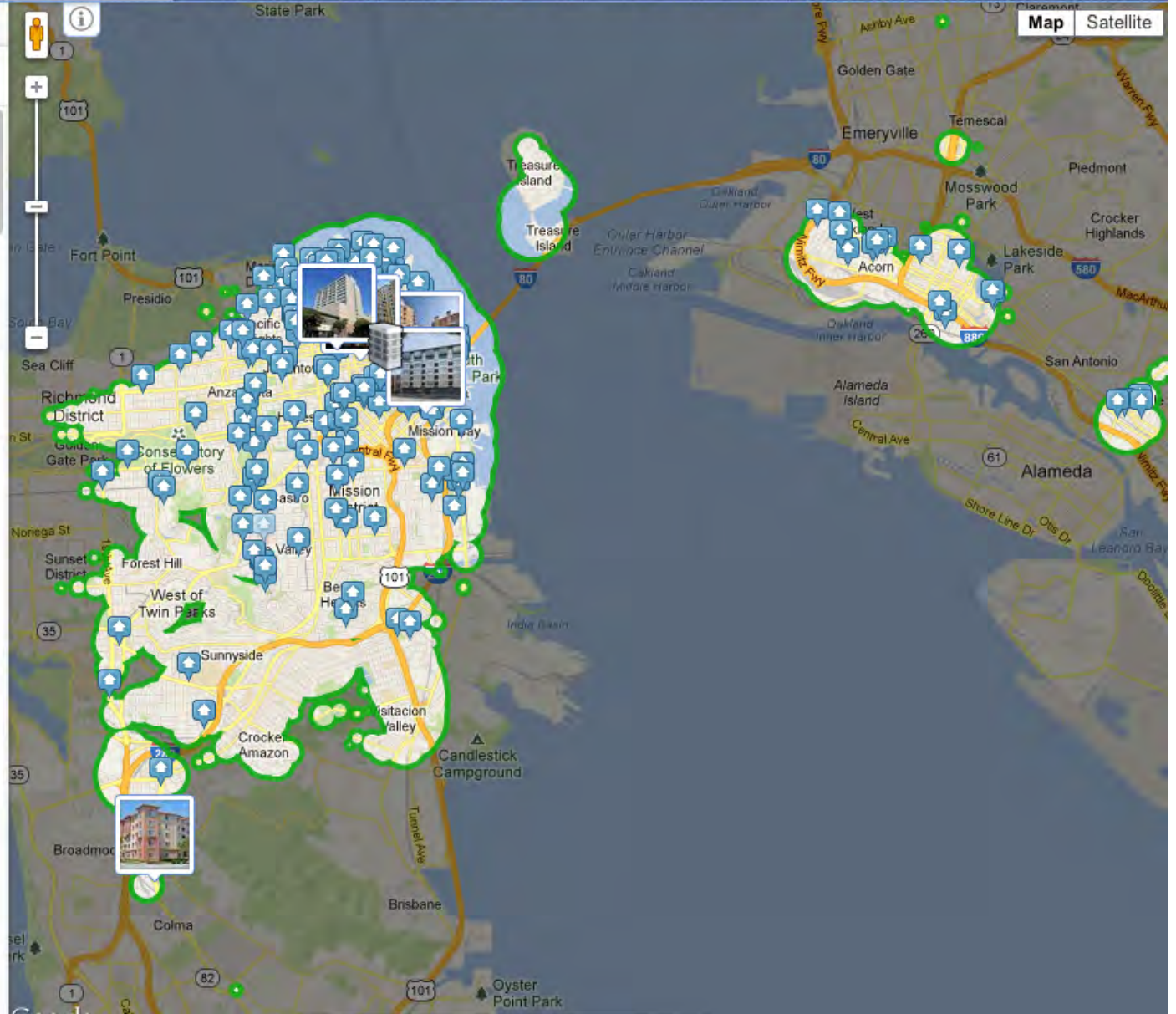
\$1,944-\$2,655
The Terraces
Studio
Downtown, San Francisco
15 mins

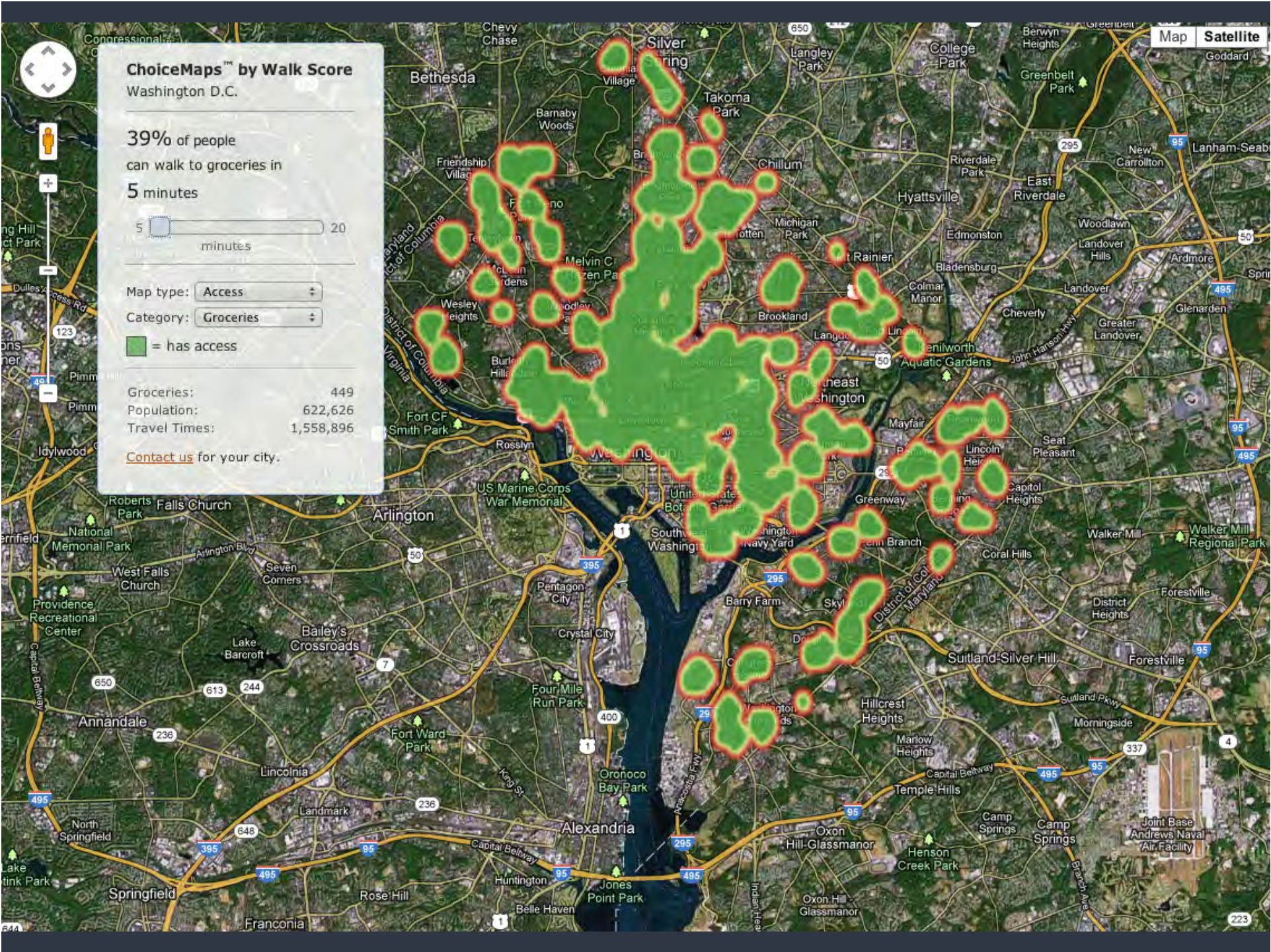


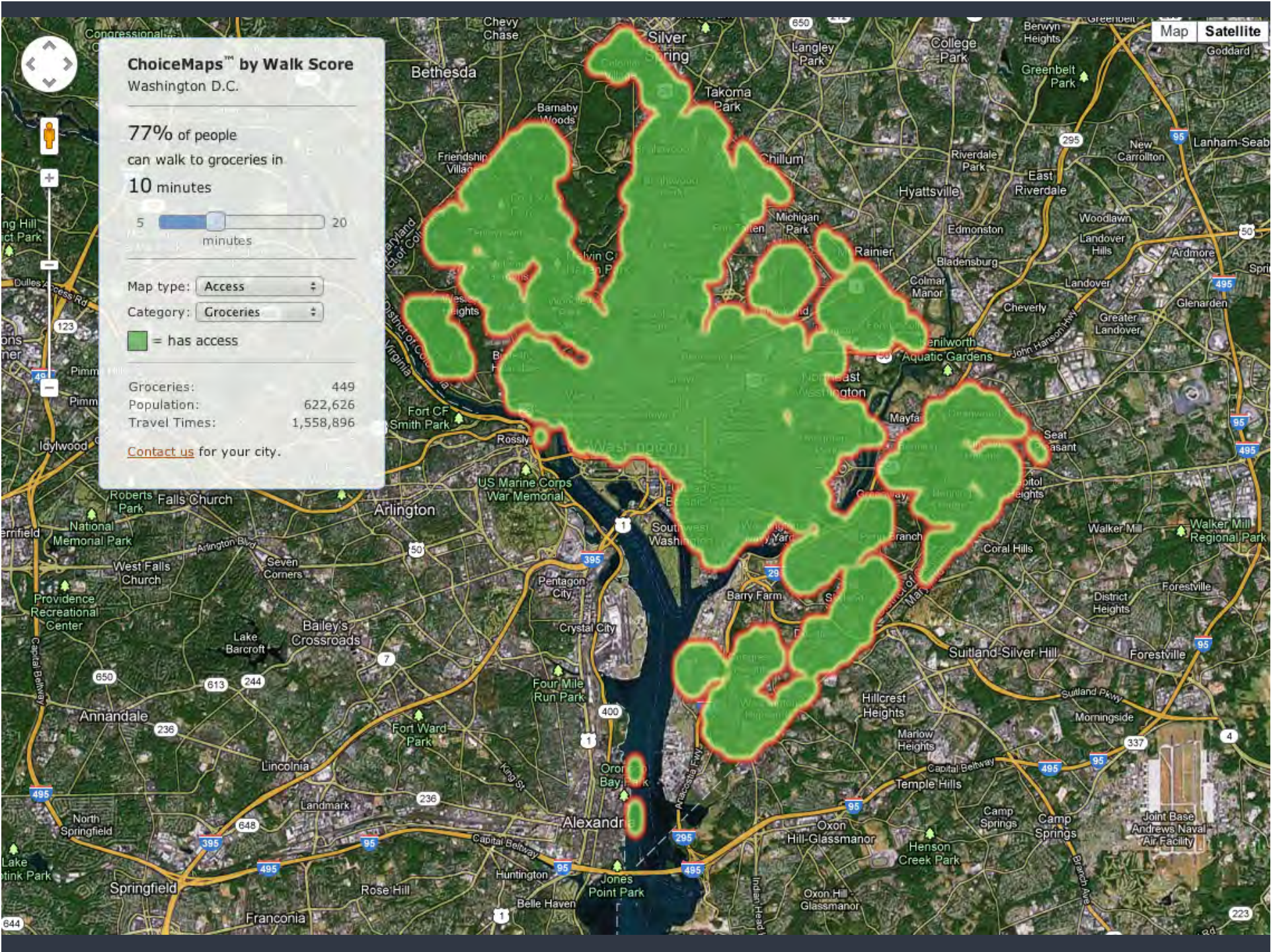
\$1,765-\$2,445
Allegro at Jack London Square
1-2 beds
Produce & Waterfront
27 mins



\$3,156-\$4,455
Argenta
1-2 beds







Walking the Walk

How Walkability
Raises Home Values
in U.S. Cities

Joe Cortright, Impresa, Inc.,
for CEOs for Cities
August 2009

CEOs
FOR CITIES
INSPIRE · CONNECT · SUCCEED

	Effect of Walk Score
Arlington	1730
Austin	2073
Bakersfield	-112
Charlotte	1986
Chicago	5260
Dallas	856
Fresno	675
Jacksonville	809
Las Vegas	-596
Phoenix	1557
Sacramento	2642
San Francisco	2985
Seattle	1413
Stockton	795
Tucson	723